

Beautiful Interiors
Limitless Variety
Quick Installation

 **SnapCab**[®]
Elevator Interiors Simplified



Over 10,000 Cab Interiors Sold Across North America

Table of Contents

CAB INTERIORS

Classic I	4
Summit I, II	4
Modern I, II	6
Reflections I	6
Classic II	8
Apex I, II	8
Contemporary I, II, III	10
Ultra I, II, III	12
Corporate I, II, III	14
Passage I	16
Sierra I, II	18
Acero I	20
Industrial I, II	22
Imperial I, II	24
Legend I, II	26
Aria I, II	28
Impression I, II, III	30
Milano I	32
Sahara I, II	34
Custom cabs & design sessions	36
ACCESSORIES	
Weight Chart	37
Ceilings & Lighting	38
Handrails & Bumpers	40
Toe Kicks & Reveals	42
Pads	42
SnapCab Drawing/Diagram	43



An Elevator Interior for Every Building



New Construction

Designers, architects and developers with a passion for detail and exotic materials will find that SnapCab provides an opportunity to design a superior cab with a wide selection of surface materials and lighting options. Exercise your creativity and achieve just the right style. Building occupants and tenants spend "quiet time" in the elevators and have the chance to notice everything in a cab. Make sure the cabs you install meet the highest quality of fit and finish available – and that means SnapCab.

Modernization and Upgrades

Cab remodeling is a great way to add value to any building. If you are a building owner or manager, SnapCab has a pre-designed cab that will fit your style and budget. Choose from over forty cabs, each with an almost limitless selection and combination of surface materials, lighting and hardware. But occasionally, someone has a unique concept that needs a custom approach. For those circumstances, SnapCab offers a complete customization option that will deliver your vision to your cab.



Environmental Impact

We offer a broad line of eco-friendly elevator cab interiors and super-efficient LED (Light Emitting Diode) ceiling light options. Our elevator professionals can assist in adding LEED® certification points to any project. Our "green" cab interiors are constructed of environmentally friendly materials with no added urea-formaldehyde. The low emissions adhesive we use in manufacturing our components is also environmentally friendly and the panel substrates and finishes contain a significant portion of recycled material.

*LEED is a registered trademark of the U.S. Green Building Council



Summit I:
layer 2 in Satin SS; layer 3, 4 & 5 in Wild Cherry laminate; Frame ceiling; 2" flat handrail



Summit II:
layer 2 & 3 in Satin SS; layer 4 & 5 in Manitoba Maple laminate; Island Downlight ceiling in Satin SS; 2" flat handrail



Classic I: layer 2, 3, 4 & 5 in Wild Cherry laminate; Frame ceiling; 2" flat handrail

Classic I

Laminates



Wild Cherry



Manitoba Maple



Cocobala



Silver Alchemy



Tuscan Walnut

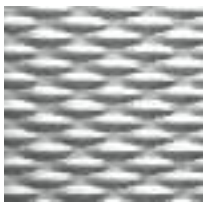


Blond Echo

Stainless Steel



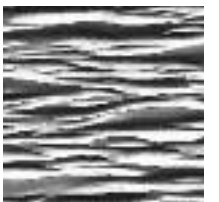
Satin Stainless



5.WL



Random Swirl



1.CS



LEED® Compliant



Elevator Code Compliant



Available in Super Light



Modern II:
layer 2, 4, 5 & 6
in Fonthill Pear;
layer 3 in Satin
SS; Modular
Downlight
ceiling in Glossy
Black laminate;
2" flat handrail



Reflections I:
layer 2 in Wind-
sor Mahogany
laminate; layer 3
in Black lami-
nate; layer 4, 5
& 6 in Tawny
Legacy laminate
with mirrors on
the back wall;
Modular Down-
light ceiling in
Glossy Black
laminate; 2" flat
handrail



Modern I: layer 2, 4, 5 & 6 in Fonthill Pear laminate;
layer 3 in Black laminate; Modular Downlight ceiling
in Glossy Black laminate; 2" flat handrail

Modern I

Laminates



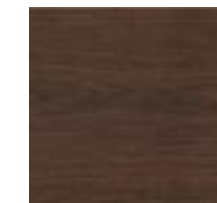
Fonthill Pear



Windsor Mahogany



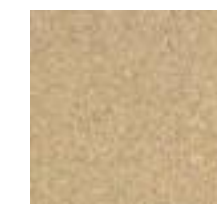
Biltmore Cherry



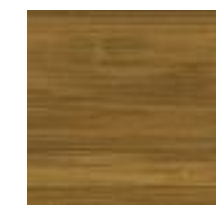
Brighton Walnut



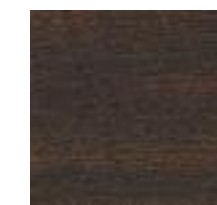
Fusion Maple



Tawny Legacy



Asian Sun



Kenya Mahogany



Milano Amber



Milano Quartz



Girona Falls



Burnished Chestnut



LEED®
Compliant



Elevator Code
Compliant



Available in
Super Light



Apex I:
layer 2 in 5.WL SS; layer 3 in Black laminate; layer 4, 5 & 6 in Western Tan laminate; Modular Downlight ceiling in Glossy Black laminate; 1.5" tubular handrail



Apex II:
layer 2 & 3 in 5.WL SS; layer 4, 5 & 6 in Western Tan laminate; Island Downlight ceiling in Satin SS; 1.5" tubular handrail



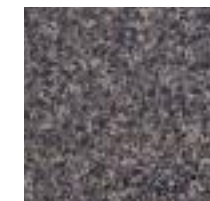
Classic II: layer 2 in Windsor Mahogany laminate; layer 3 in Black laminate; layer 4, 5 & 6 in Coral Roca laminate; Frame ceiling; 2" flat handrail

Classic II

Laminates



Windsor Mahogany



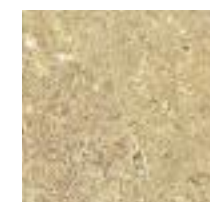
Blackstar Granite



Williamsburg Cherry



Kensington Maple

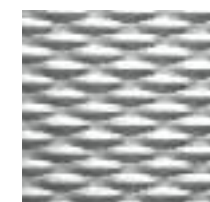


Coral Roca



Western Tan

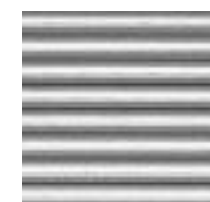
Stainless Steel



5.WL



Sandtex.BA



6.SL



1.NA



LEED®
Compliant



Elevator Code
Compliant



Available in
Super Light



Contemporary II:
layer 2, 3, 4 & 5
in Wild Cherry
laminate; Frame
ceiling; 4" flat
handrail



Contemporary III:
layer 2 in Satin
SS; layer 3, 4 & 5
in Grey Pampas
laminate; Island
Downlight ceiling
in Satin SS; 2" flat
handrail



Contemporary I: layer 2, 3, 4 & 5 in Manitoba Maple
laminate; Frame ceiling; 4" flat handrail

Contemporary I

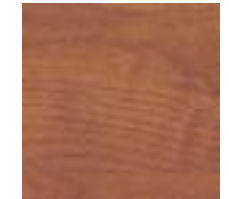
Laminates



Manitoba Maple



Grey Pampas



Wild Cherry



Yarrow



Honduran Mahogany



Monticello Maple



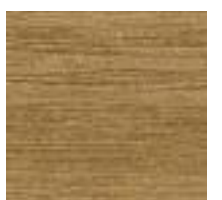
Sea Glass



Versailles Anigre



Windswept



Brazilwood



Pewter Brush



Madagascar



LEED®
Compliant



Elevator Code
Compliant



Available in
Super Light



Ultra II:
layer 2 & 4 in Wild Cherry laminate; layer 3 in Black laminate; Island Downlight ceiling in Satin SS; 2" flat handrail



Ultra III:
layer 2 & 4 in Xanadu laminate; layer 3 in Satin SS; Island Downlight ceiling in Satin SS; 4" flat handrail



Ultra I: layer 2 & 4 in Fusion Maple laminate; layer 3 & 5 in Black laminate; Frame ceiling; 2" flat handrail

Ultra I

Laminates



Wild Cherry



Huntington Maple



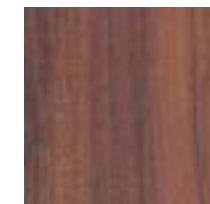
Tan Echo



Zanzibar



Fonthill Pear



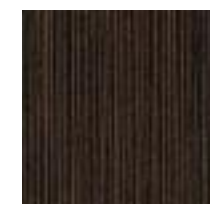
Windsor Mahogany



Kiwi



Biltmore Cherry



Xanadu



Fusion Maple



Castle Oak



Asian Sun



LEED® Compliant



Elevator Code Compliant



Available in Super Light



Corporate II:
layer 2 & 4 in Xanadu laminate; back wall layer 4 in mirror; layer 3 in Satin SS; Island Downlight ceiling in Satin SS; 2" flat handrail



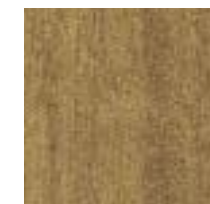
Corporate III:
layer 2 & 4 in Fonthill Pear laminate; accents in Linen SS; layer 3 in Satin SS; Island Downlight ceiling in Satin SS; 2" flat handrail



Corporate I: layer 2 & 4 in Amber Cherry laminate; layer 3 in Satin SS; Island Downlight ceiling in Satin SS; 2" flat handrail

Corporate I

Laminates



Amber Cherry



Fusion Maple



Blond Echo



Xanadu

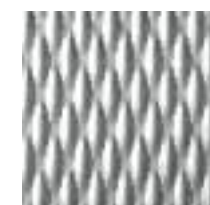


Titanium EV

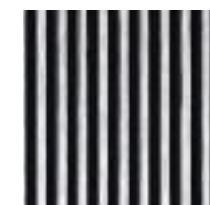


Fonthill Pear

Stainless Steel



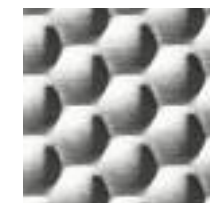
5.WL



6.SL(PC)



Linen.BA



6.HC



LEED® Compliant



Elevator Code Compliant



Available in Super Light



Passage I:
layer 2 & 4 in Amber Cherry laminate; back wall layer 2 & 4, middle panel in mirror; layer 3 in Satin SS; Island Downlight ceiling in Satin SS; 2" flat handrail



Passage I:
handrail detail



Passage I: layer 2 & 4 in Fusion Maple laminate; back wall layer 2 & 4, middle panel in mirror; layer 3 in Satin SS; Island Downlight ceiling in Satin SS; 2" flat handrail

Passage I

Laminates



Fusion Maple



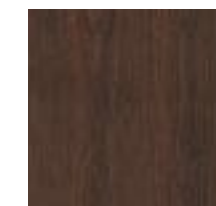
Amber Cherry



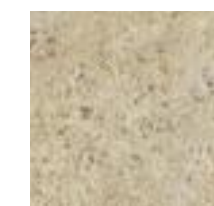
River Cherry



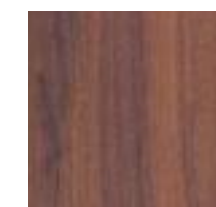
Windswept Bronze



Brighton Walnut



Sunstone



Windsor Mahogany



Huntington Maple



Fonthill Pear



Versailles Anigre



Natural Tigris



Figured Mahogany



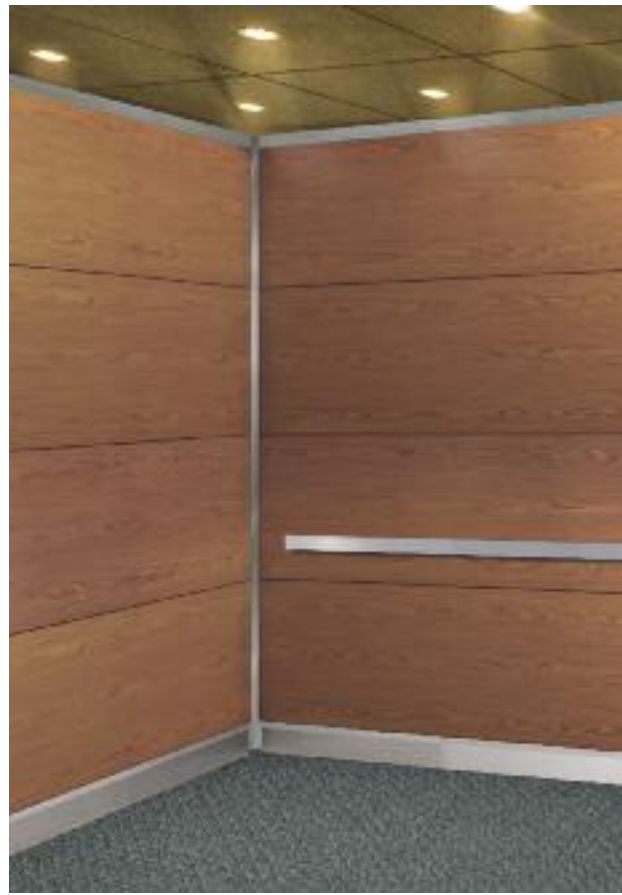
LEED® Compliant



Elevator Code Compliant



Available in Super Light



Sierra I:
layer 2, 3, 4 & 5
in Cherry American
FC wood veneer, Island
Downlight ceiling
in Satin SS; 2"
flat handrail



Sierra II:
layer 2 in Satin
SS; layer 3, 4 &
5 in Birch White
FC wood veneer, Frame
ceiling; oval
handrail



**Sierra I: layer 2, 3, 4 & 5 in Birch White FC wood veneer,
Modular Downlight ceiling in Glossy Black laminate;
oval handrail**

Sierra I

Wood Veneer



Birch, White FC



Cherry, American FC



Cedar, W. Red QC



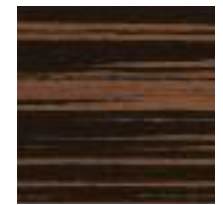
Birch, Red FC



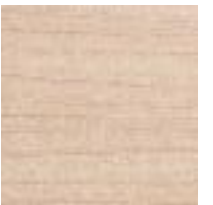
Rosewood, E Indian, QC



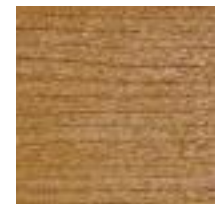
Oak, Red Rift Cut



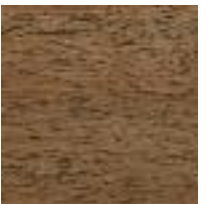
Ebony, FT QC



Maple, QC



Cherry, American QC



Walnut, QC



Bamboo, Caramel/Narrow



Mahogany, African FC



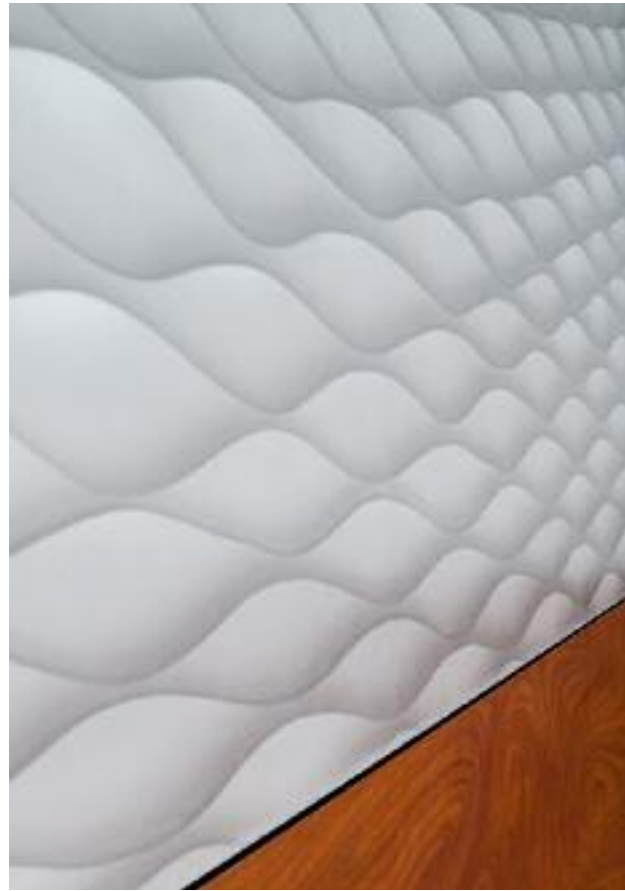
LEED®
Compliant



Elevator Code
Compliant



Available in
Super Light



Acero I:
 Enliven your environment with the dynamic richness and depth of Móz Metal surfaces. Choose from their collection of standard colors and patterns. The design possibilities are truly endless.



Acero I:
 handrail detail



Acero I: layer 2 in Satin SS; layer 3 & 5 in Wild Cherry laminate; layer 4 in Móz Kelp (Clear) aluminum, Island Downlight ceiling in Satin SS; 1.5" tubular handrail

Acero I

Móz



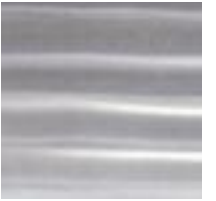
Kelp-Clear



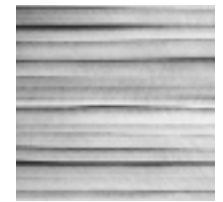
Clouds-Clear



Waves-Clear



Smooth-Winter White

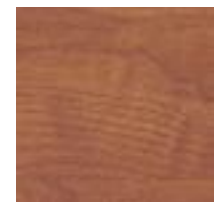


Bamboo-Clear



Ripples-Clear

Laminates



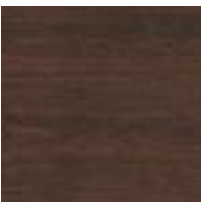
Wild Cherry



Asian Sun



Monticello Maple



Brighton Walnut



LEED®
 Compliant



Elevator Code
 Compliant



Available in
 Super Light



Industrial I:
layer 2, 3, 4 & 5
in Satin SS;
Frame ceiling; 2"
flat handrail; 4"
flat bumper rail



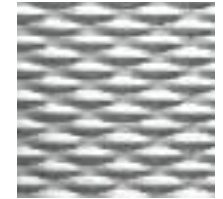
Industrial II:
layer 2, 3 & 5 in
Satin SS; layer 4
in Móz Waves
(Royal Blue) alu-
minum; Island
Downlight ceil-
ing in Satin SS;
4" flat handrail



Industrial I: layer 2, 3, 4 & 5 in 5.WL SS; Modular Downlight ceiling in Glossy Black laminate; 4" flat handrail

Industrial I

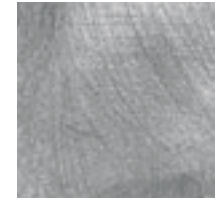
Stainless Steel



5.WL



Satin Stainless



Random Swirl



Linen.BA

Móz



Waves-Royal Blue



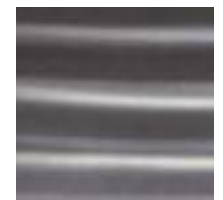
Coral-Clear



Fog-Clear



Ripples-Copper



Smooth-Graphite



Coarse Grain-Clear



LEED®
Compliant



Elevator Code
Compliant



Available in
Super Light



Imperial II:
layer 2 & 4 in 5.WL SS; layer 3 & 5 in Satin SS; Modular Downlight ceiling in Glossy Black laminate; 1.5" tubular handrail



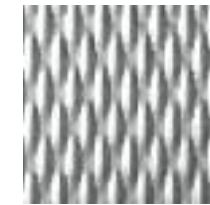
Imperial II:
handrail detail



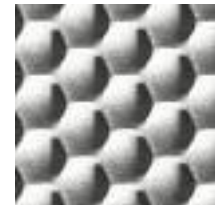
Imperial I: layer 2 & 4 in 5.WL SS; layer 3 in Satin SS; Island Downlight ceiling in Satin SS; 1.5" tubular handrail

Imperial I

Stainless Steel



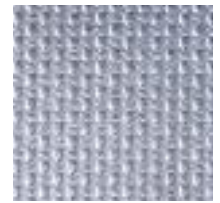
5.WL



6.HC



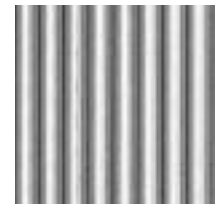
6.WL



Linen.BA



RTP



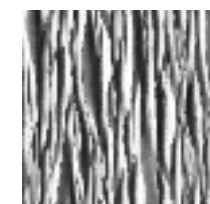
6.SL



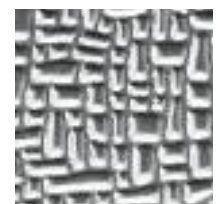
4.LB



Sandtex.BA



1.CS



1.NA



2.FL(PC)



6.HC (PC)



LEED®
Compliant



Elevator Code
Compliant



Available in
Super Light



Legend II:
 layers 2-9 in
 Satin SS; vertical
 accent panels in
 Móz Kelp (Clear)
 Aluminum;
 Modular Down-
 light ceiling in
 Glossy Black
 laminate; 2" flat
 handrail



Legend II:
 layers 2-9 in
 Satin SS; vertical
 accent panels in
 Móz Ripples
 (Electric Red)
 Aluminum;
 Island Downlight
 ceiling in Satin
 SS; 2" flat
 handrail



Legend I: layers 2-9 in Satin SS; vertical accent panels
 in Cherry American QC wood veneer;
 Island Downlight ceiling in Satin SS; 2" flat handrail

Legend I

Wood Veneer



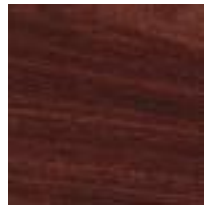
Cherry, American QC



Maple, QC

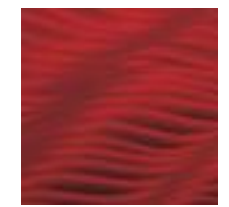


Bamboo, Caramel/Narrow



Rosewood, E. Indian FC

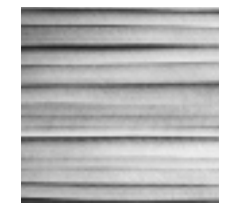
Móz



Ripples-Electric Red



Kelp-Clear



Bamboo-Clear



Waves-Champagne

Stainless Steel



Satin Stainless



Non-Directional



LEED®
Compliant



Elevator Code
Compliant



Available in
Super Light



Aria I:
layer 2 & 4 in Rosewood E. Indian QC wood veneer; layer 3 & 5 in Satin Bronze; Island Downlight ceiling in Satin Bronze; 4" flat handrail



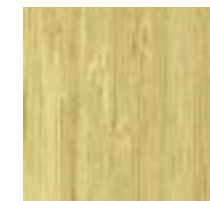
Aria II:
layer 2 & 4 in Bamboo Natural/Narrow wood veneer; layer 3 in Satin SS; Island Downlight ceiling in Satin SS; 2" flat handrail



Aria I: layer 2 & 4 in Bamboo Natural/Narrow wood veneer; layer 3 & 5 in Satin SS; Island Downlight ceiling in Satin SS; 2" flat handrail

Aria I

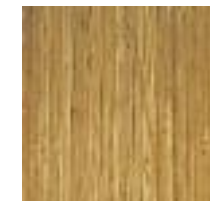
Wood Veneer



Bamboo, Natural/Narrow



Cherry, American FC



Bamboo, Caramel/Narrow



Cherry, American QC



Mahogany, African FC



Zebrawood, FT QC



Ash, Japanese QC



Birch, Red FC



Rosewood, E. Indian QC



Wenge, FT QC



Birch, White FC



Ebony, FT QC



LEED® Compliant



Elevator Code Compliant



Available in Super Light



Impression II: layer 2 in Wild Cherry laminate; layer 3 in Black laminate; layer 4, 5 & 6 in Nirvana laminate with custom logo on back wall layer 5; Modular Downlight ceiling in Glossy Black laminate; 2" flat handrail



Impression III: layer 2 in Squares.BA SS; layer 3 in Satin SS; layer 4, 5 & 6 in Designer White laminate with custom logo on back wall layer 5; Island Downlight ceiling in Satin SS; 2" flat handrail



Impression I: layer 2 in Squares.BA SS; layer 3, 4, & 5 in White aluminum with custom graphics on back wall layers 3, 4 & 5; Island Downlight ceiling in Satin SS; 1.5" tubular handrail

Impression I

Introducing Wall Panel Graphics

- Sell advertising space in your elevator
- Brand your company or just be creative
- As little as one panel, wall or the entire cab
- Durable, vandal resistant finish on aluminum or plastic laminate
- Panels remove easily to change advertisement

Laminates

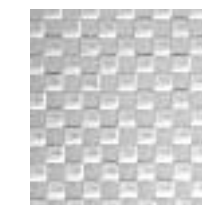


Wild Cherry



Nirvana

Stainless Steel



Squares.BA



Non-Directional



LEED® Compliant



Elevator Code Compliant



Available in Super Light



Milano I:
handrail detail



Milano I:
corner detail



Milano I: layer 2 in Blue Pearl granite; layer 3 in Satin SS;
layer 4, 5 & 6 in Crema Marfil marble; Island Downlight
ceiling in Satin SS; 2" flat handrail

Milano I

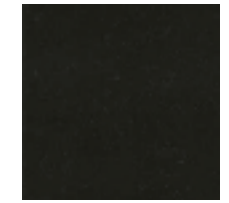
Stone



Crema Marfil



Blue Pearl



Absolute Black



Baltic Brown



Giallo Napoleone



Giallo Ornamentale



Marron Imperiale



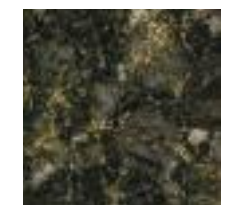
Rojo Alicante



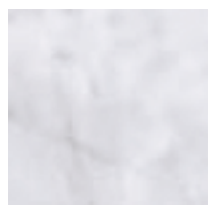
Breccia Onicate



Botticino Fiorito



Butterfly Green



White Carrara



LEED®
Compliant



Elevator Code
Compliant



Specify Your
Projects Stone



Sahara II:
 layer 2 & 4 in Organic (Nickel); vertical accents in Sandtex.BA SS; layer 3 in Satin SS; Inlay in Black Anodized Aluminum; Island Downlight ceiling in Designer White laminate; 1.5" tubular handrail



Sahara I:
 layer 2 & 4 in Museum (Nickel); layer 3 in Satin SS; Aluminum Inlay in Black Anodized Aluminum; 2" flat handrail



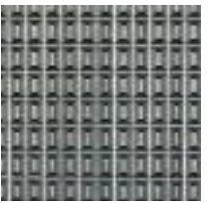
Sahara I: layer 2 & 4 in Organic (Nickel); layer 3 in Satin SS; Inlay in Black Anodized Aluminum; Island Downlight ceiling in Designer White laminate; 1.5" tubular handrail

Sahara I

GageCarve



Organic (Champagne)



Museum (Nickel)



Linear (Brass)



Horizon (Nickel)



Metro (Champagne)



Ribbon (Nickel)



Miami (Nickel)



Rough Cut (Bronze)

Stainless Steel



Sandtex.BA



Non-Directional



LEED® Compliant



Elevator Code Compliant



Available in Super Light

Custom Cabs

SnapCab knows elevator interiors like no one else in the industry. Over the last few years we have successfully provided kits to upgrade over 10,000 cabs all over North America. Our SnapCab pre-designed models seem to please almost everyone. But for those looking for something a little different, we have custom interior options.

The Process

Occasionally, a SnapCab project manager is asked by an architect, designer or elevator consultant to price a cab that has been carefully specified to blend with the overall scope of a project. When this happens, it is the perfect time to set up a Design Session with one of our experienced, knowledgeable and competent staff. They will walk you through the design process using highly-customized 3D modeling software. Video conferencing is easy, requires no special hardware, software or cameras (although you may use one if you like).



SnapCab will price the cab as originally specified and also provide any value-engineered alternatives that were created during the Design Session. These alternatives will typically cost 20% less than the specified cab and will be easier to install and maintain. Often, these cabs are accepted as a practical alternative.

However, when clients choose to go forward with their original specified design, SnapCab turns on its manufacturing expertise and becomes the specifier's best friend. The results have been spectacular. Some of our most beautiful cabs have been produced in partnership with first-rate architects and designers. In fact, this collaborative approach has been so successful, that SnapCab now has a LEED Accredited Professional on staff to further enhance our ability to turn your ideas into reality.



William Penn House: lower panels in Black Quartz; upper panels in GageCast Woven Linear; Satin SS accent panels; 1.5" tubular handrail



Melt Restaurant: Blue Mirror Glass hanging panels; Satin SS accent panels; Custom Island Downlight ceiling in Mirror SS with fiber optic "starry night" lighting; 1.5" tubular handrail



1515 Wynkoop: lower panels in Verde Antique stone; upper panels in Curly Maple wood veneer; inlay in Satin SS; Custom Satin SS ceiling with LED perimeter lighting; custom handrail

Weight Chart

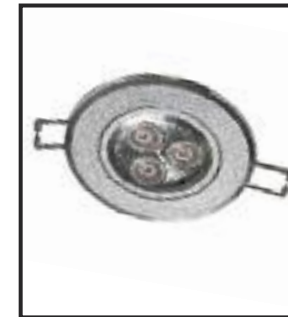
Model name	Elevator capacity							
	2000 lb	2500 lb	3000 lb	3500 lb	4000 lb	4500 lb	5000 lb	
Wall panel system (3 walls)	Classic I	323	345	368	399	481	489	520
	Summit I	350	375	400	433	523	531	565
	Summit II	378	404	432	467	565	574	611
	Modern I	323	345	368	399	481	489	520
	Modern II	336	359	383	415	500	509	541
	Reflections I	367	398	421	451	522	534	567
	Classic II	323	345	368	399	481	489	520
	Apex I	350	375	400	433	523	531	565
	Apex II	363	389	415	449	542	551	586
	Contemporary I	323	345	368	399	481	489	520
	Contemporary II	323	345	368	399	481	489	520
	Contemporary III	350	375	400	433	523	531	565
	Ultra I	323	345	368	399	481	489	520
	Ultra II	323	345	368	399	481	489	520
	Ultra III	336	359	383	415	500	509	541
	Corporate I	330	353	377	408	492	501	533
	Corporate II	347	373	396	427	508	517	549
	Corporate III	358	382	408	442	530	533	567
	Passage I	326	349	371	400	480	488	518
	Sierra I	323	345	368	399	481	489	520
	Sierra II	350	375	400	433	523	531	565
	Acero I	357	381	407	440	532	541	575
	Industrial I	434	464	496	537	650	659	703
	Industrial II	412	441	471	510	616	627	667
	Imperial I	434	464	496	537	650	659	703
	Imperial II	434	464	496	537	650	659	703
	Legend I	338	368	400	441	537	548	591
	Legend II	344	375	406	447	544	555	597
	Aria I	350	375	400	433	523	531	565
	Aria II	330	353	377	408	492	501	533
Impression I	350	375	400	433	523	531	565	
Impression II	323	345	368	399	481	489	520	
Impression III	363	389	415	449	542	551	586	
Milano I	500	536	572	620	750	763	812	
Sahara I	455	488	521	564	682	694	739	
Sahara II	446	478	511	554	673	685	729	
Super Light – approx. deduction	77	83	88	96	117	119	127	
Ceilings	Economy or Frame Ceiling	26	30	32	33	35	38	42
	Modular Downlight Ceiling	82	93	102	111	133	146	161
	Island Downlight Ceiling w/ laminate	92	104	114	123	140	155	174
	Island Downlight Ceiling w/ stainless	111	127	140	151	173	193	216
	Island Downlight Ceiling w/ bronze	122	138	149	166	191	214	240
Handrails and Bumpers (3 walls)	1.5" & 2" Tubular, 1.5" Vault, Oval	20	22	23	24	28	29	30
	3/8 x 2" Flat Bar	37	40	43	47	58	59	63
	3/8" x 4" Flat Bar	67	73	79	86	108	110	117
	1/4" x 6" Flat Bar	94	103	111	121	150	153	163
	1/4" x 8" Flat Bar	134	146	157	173	215	219	234

Most cabs have existing wall panels, ceilings and handrails. If the weight of those items closely matches the weight of the new items listed here, no adjustments to your system are necessary. However, if there is a significant weight difference, or if there are presently no panels in your cab, the impact of the weight must be considered, as should the super light panel option (additional cost).

Elevator Ceilings & Lighting...

All SnapCab ceilings shown below have frames constructed of sturdy 1½" extruded "T" aluminum. All are made with access to the ceiling exit hatch and allow for ventilation around the perimeter.

Standard LED



- No heat or UV in the light beam
- Wide beam spread
- Long life
- Tamper proof trim ring
- No mercury

Premium LED



- Same as standard LED, plus:
- 0-100% Digital Dimming
 - Integrated Emergency Light battery backup
 - Stainless steel construction



Economy Frame Ceiling

This non-welded aluminum frame ceiling is divided into 3 sections (4 or 5 sections in larger elevators), with a translucent light-diffusing panel in each section.

Ceiling Frame Finish:

- Brushed

Diffuser:

- Translucent

Options:

- Fluorescent light kit
- LED light kit
- Trash guard



Frame Ceiling

This ceiling style is lightweight and energy efficient. Reuse your existing fluorescent fixtures or you can purchase new ones. The aluminum ceiling frame is divided into six sections (nine for larger elevators); each section contains either a translucent light-diffusing panel or an aluminum eggcrate diffuser.

Ceiling Frame Finish:

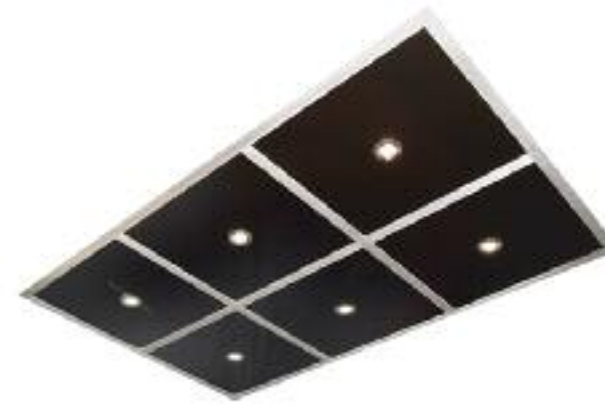
- Brushed (standard)
- Black
- Bronze
- Custom

Diffuser:

- Translucent
- Aluminum eggcrate

Options:

- Fluorescent light kit
- LED light kit
- Trash guard



Modular Downlight Ceiling

This option combines the efficiency and light weight of the Frame Ceiling with the style of modular lighting. The aluminum ceiling frame is divided into six sections (nine for larger elevators); each section contains a fire-rated panel faced with plastic laminate.

Ceiling Frame Finish:

- Brushed (standard)
- Black
- Bronze
- Custom

Ceiling Panel Finish:

- Glossy black plastic laminate
- Glossy white plastic laminate
- Brushed aluminum laminate
- Other plastic laminate

Lighting:

- Standard LED
- Premium LED
- Halogen



Island Downlight Ceiling

This premium ceiling is made of fire-rated substrate, surfaced with a choice of plastic laminate, brushed aluminum, stainless steel or bronze. Ceiling is divided into six panels (nine for larger elevators), each panel contains a downlight fixture.

Ceiling Panel Finish:

- Plastic laminate
- Brushed aluminum laminate
- Bronze tone aluminum laminate
- Satin stainless steel
- Mirror stainless steel
- Satin bronze
- Mirror bronze

Lighting:

- Standard LED
- Premium LED
- Halogen
- Perimeter

For additional information visit www.SnapCabs.com

Handrails & Bumpers

Handrails are through-bolted at our factory, making SnapCab elevator handrails the most secure in the industry. Handrails are mounted 32" above the floor, unless otherwise requested, and meet or exceed ADA specifications. Standard handrails and bumpers have returned ends for added safety and durability, and set screws for access.

Bumpers are an option and, like our handrails, they are securely through-bolted at the factory. Bumpers are mounted 12" above the floor, unless otherwise requested.



1.5" Tubular
Satin Stainless Steel
Mirror Stainless Steel
Satin Bronze
Mirror Bronze



2" Tubular
Satin Stainless Steel
Mirror Stainless Steel
Satin Bronze
Mirror Bronze



Oval
Satin Stainless Steel
Mirror Stainless Steel
Satin Bronze
Mirror Bronze



1.5" Vault
Satin Stainless Steel
Mirror Stainless Steel
Satin Bronze
Mirror Bronze



1.5" Flat Bar
Satin Stainless Steel
Mirror Stainless Steel
Satin Bronze
Mirror Bronze



2" Flat Bar
Satin Stainless Steel
Mirror Stainless Steel
Satin Bronze
Mirror Bronze



4" Flat Bar
Satin Stainless Steel
Satin Bronze



6" Flat Bar
Satin Stainless Steel
Satin Bronze



8" Flat Bar
Satin Stainless Steel



For additional information visit www.SnapCabs.com

See How SnapCab Interiors Come Together

❶ Interlocking Panels

The patented interlocking panel joint is how the panels come together. As each layer is installed in the cab, the next layer hides the screws from the layer below. Unlike traditional hanging panels, no clips or hardware other than the provided screws, are necessary.

❷ Top Cap

Once all the panels are securely mounted into the cab shell, the walls are finished with an aluminum top cap. This piece features an integrated pad hook channel, which eliminates the visual nuisance and the added cost of having pad buttons installed on your panels.

Protect your new cab interior with superior vinyl pads with pre-attached pad hooks. The rugged polyester thread throughout will stand up to years of use. Matching, heavy duty vinyl bindings are added for good looks and extra durability on all edges.



❸ Ceilings

The right ceiling can dramatically affect the appearance of a cab interior. SnapCab offers four standard ceiling options, with many variations. See pages 38 and 39 for details. Custom ceilings are also available, see page 36.

❹ Reveals

Reveals provide a sophisticated finish to the cab interior. As in fine furniture, the designs include corner pieces that lead the eye to the rich surface materials. Our reveals are made of black powder coated steel, satin stainless steel or satin bronze.

❺ Panel Replacement

There are several reasons why a building owner would want to change one or more panels down the road: damage, vandalism or possibly a change in the buildings appearance. With the SnapCab patented interlocking panel system, replacement for any reason is fast and easy.



❻ Pre-attached Handrails

Yet another benefit of our system is that all handrails and bumpers come pre-attached and through-bolted from our factory. This makes them the most safe and secure in the industry! See page 40 and 41.

❼ Toe Kicks

Toe kicks (layer 1) prevent damage to the interior surface material by providing a small buffer zone at the bottom of the cab and are available in black powder coated steel, satin stainless steel or satin bronze. Just above the toe kicks are the aluminum toe kick binders that protect the bottom edge of the panels. This binder is what the first panel (layer 2) rests in, and provides the ventilation necessary to meet elevator code.

❽ Flooring

Most building owners prefer to select flooring that matches other floors in their building. One important reminder: if new flooring will add significant weight (ceramic tile or stone, for example) be sure to consult with your SnapCab representative beforehand, as the weight may impact the elevator system.

❾ Panel Binder

For cabs with side opening doors, the visible panel edges near the door(s) are protected with aluminum panel binders. The angle on the panel binder will deflect any objects that may otherwise damage the panels. This is yet another feature not found with traditional hanging panels.

Front Returns and Doors

Decide if your front return wall and doors require attention. You can elect to keep them as is, refinish them or replace them. A SnapCab panel can also be applied to most return walls.

Fixtures

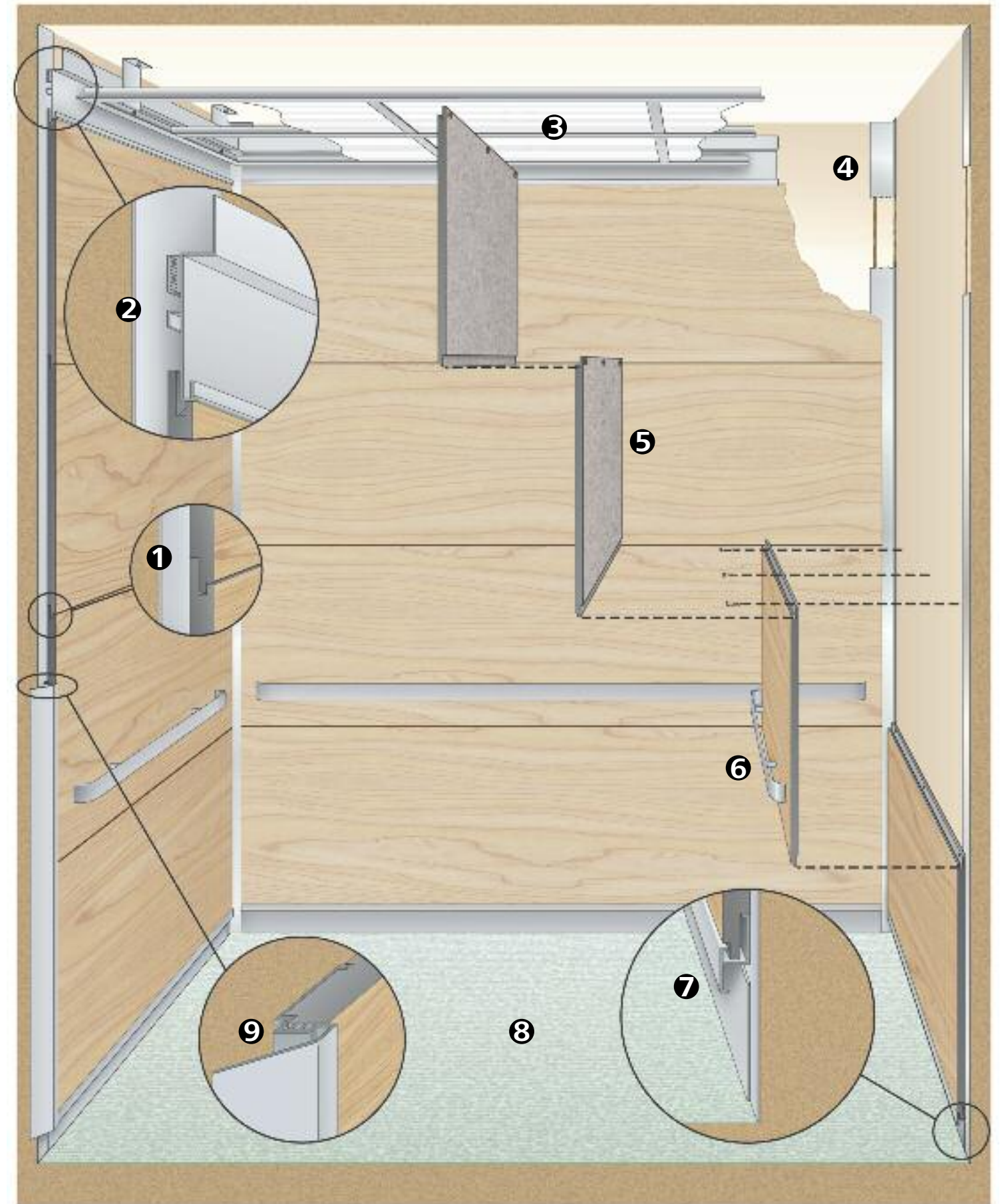
You can upgrade the car operating panel, position indicator, telephone and other fixtures to more modern designs. Often, they can introduce new functionality at the same time.

Express Ordering

Need your cab interior yesterday? Express manufacturing and shipping is available for certain models at a higher price. Contact your SnapCab representative for details.

Final Approval

SnapCab can supply a computer-generated image showing how your cab will look and samples of the actual surface materials so that you can confirm your order with confidence. Ask your representative for a free presentation board today.



The manufacturer reserves the right to modify the specifications of the product at any time without prior notice. © Bostock Company, Inc. 2012 CAT1201BOS

Quick Quote Form

P: 888-766-7834

F: 877-855-3714

E: sales@SnapCabs.com

www.SnapCabs.com

175 Titus Avenue, Suite 200
Warrington, PA 18976

Quantity of like cabs: _____ Model #: _____

Cab capacity: _____ Cab height: _____

Building name: _____

Address: _____

Contact name: _____

Company: _____

Phone: _____ Fax: _____

Email: _____

Cab Interior: _____

Layer 6 finish: _____

Layer 5 finish: _____

Layer 4 finish: _____

Layer 3 finish: _____

Layer 2 finish: _____

Layer 1 (toe kick): Satin stainless steel Satin bronze
 Black powder coat

Reveals: Satin stainless steel Satin bronze
 Black powder coat

Apply new panels to:

Side walls Back wall Front return wall(s)

Comments: _____



Elevator Interiors Simplified

Apply handrails to:

Side walls Back wall

Finish: _____

Design: 2" flat bar

1.5" tubular

Other: _____

Apply bumpers to:

Side walls Back wall

Finish: _____

Design: 2" flat bar

1.5" tubular

Other: _____

Pads with pre-attached pad hooks:

Vinyl Pads: Grey Tan

Ceilings:

Island Downlight Ceiling

Finish: _____

Lighting: Standard LED

Other _____

Modular Downlight Ceiling

Finish: Glossy black laminate

Other laminate _____

Lighting: Standard LED

Other _____

Frame Ceiling

Diffuser style: Translucent Eggcrate

Options: Fluorescent light kit LED light kit

Economy Frame Ceiling

Diffuser style: Translucent

Options: Fluorescent light kit LED light kit

